

SHEET LAYOUT

GENERAL NOTES

- EXISTING UTILITY LOCATIONS ARE APPROXIMATE AS SHOWN. IT IS THE CONTRACTOR'S RESPONSIBILITY TO NOTIFY UTILITY COMPANIES AND VERIFY THEIR LOCATION PRIOR TO CONSTRUCTION. THE OWNER AND THE ENGINEER ARE NOT RESPONSIBLE FOR DAMAGES TO THE EXISTING UTILITIES THAT MAY OCCUR DURING CONSTRUCTION.
- THE CONTRACTOR SHALL BE RESPONSIBLE FOR COORDINATING THE LOCATION OF THE EXISTING UNDERGROUND UTILITIES BY CALLING BUD (BEFORE YOU DIG): 800-752-6007.
- ACTUAL DEPTHS OF EXISTING UTILITIES SHALL BE VERIFIED PRIOR TO LAYING PIPE. ADJUSTMENTS TO PROPOSED PIPE GRADES SHALL BE APPROVED BY THE ENGINEER.
- ANY ADJUSTMENTS OR RELOCATIONS OF EXISTING WATER AND GAS UTILITIES, DISTRIBUTION LINES OR SERVICE LINES SHALL BE PERFORMED BY OTHERS. THE CONTRACTOR SHALL TAKE SPECIAL CARE TO PROTECT EXISTING UTILITIES TO THE MAXIMUM EXTENT PRACTICABLE. THE CONTRACTOR SHALL COORDINATE HIS WORK WITH THE OWNER TO MINIMIZE DISRUPTION OF EXISTING SERVICES. THE CONTRACTOR SHALL NOTIFY THE OWNER AND ENGINEER 2 DAYS IN ADVANCE OF ANY WORK WHICH REQUIRES EXISTING UTILITIES TO BE TAKEN OUT OF SERVICE. THE CONTRACTOR SHALL BE RESPONSIBLE FOR ALL FEES, FINES, AND/OR CHARGES ASSOCIATED WITH RELOCATION OR ADJUSTMENT OF EXISTING UTILITIES AND DAMAGES OCCURRING TO UTILITIES DURING THE COURSE OF THIS PROJECT.
- SANITARY SEWERS SHALL BE SDR-35 PVC AND/OR GLASS BT DIP (WITH PROTECTO 401 COATING) AS DESIGNATED ON THE PROPOSED PLANS.
- ALL NEW MANHOLES SHALL INCLUDE FLOW CHANNELS WITH DEPTHS EQUAL TO THE DIAMETER OF THE SEWER PIPE.
- ALL MANHOLES ARE 4' DIAMETER UNLESS OTHERWISE NOTED.
- CONTRACTOR IS RESPONSIBLE FOR TEMPORARY FACILITIES TO MAINTAIN SEWER SERVICE. NO BYPASSES SHALL BE ALLOWED. CONTRACTOR SHALL SUBMIT A CONSTRUCTION PHASING PLAN TO INCLUDE MAINTAINING EXISTING SERVICE.
- NEW SANITARY SEWERS WILL NOT BE ACCEPTED UNTIL ALL TESTING REQUIRED BY THE CONTRACT DOCUMENTS ARE CONDUCTED.
- ANY UNSUITABLE PIPE SUBGRADE MATERIAL ENCOUNTERED SHALL BE REMOVED AND REPLACED WITH PROPERLY COMPACTED FILL AS DIRECTED BY THE ENGINEER.
- EXISTING FENCES, WALLS, TREES OR OTHER VEGETATION AND PROPERTY SHALL BE PROTECTED FROM DAMAGE TO THE MAXIMUM EXTENT POSSIBLE. TREES WHICH ARE ANTICIPATED TO BE DAMAGED SHALL BE FLAGGED AND REVIEWED WITH THE OWNER PRIOR TO PROCEEDING WITH ADJACENT WORK. ALL OTHER TREES WILL BE CONSIDERED PROTECTED. THE CONTRACTOR SHALL RESTORE EXISTING PROPERTY TO CONDITIONS EQUAL TO PRE-CONSTRUCTION CONDITIONS. DAMAGED TREES NOT APPROVED FOR REMOVAL SHALL BE REPLACED BY THE CONTRACTOR. FENCES REMOVED SHALL BE RESET AFTER ADJACENT SEWER INSTALLATION IS COMPLETE.
- MANHOLE RIMS SHALL BE SET TO SPECIFIED GRADES.
- NON-PAVED SITE RESTORATION SHALL CONFORM TO THE STANDARDS SET FORTH IN THE CONTRACT DOCUMENTS.
- ROCK REMOVAL IS A PAY ITEM.
- THE CONTRACTOR SHALL TAKE SPECIAL CARE TO MAINTAIN CONTINUOUS ACCESS TO ALL COMMERCIAL ESTABLISHMENTS AND RESIDENTIAL DWELLINGS.
- FOR EROSION CONTROL PURPOSES, THE CONTRACTOR SHALL STOCKPILE EXCAVATED TRENCH MATERIAL ON THE UPHILL SIDE (OPPOSITE OF STREAM) OF EXPOSED TRENCH.
- ENGINEER IS RESPONSIBLE FOR STAKING ALL PROPOSED MANHOLE LOCATIONS.
- ALL MATERIALS, EQUIPMENT, AND CONSTRUCTION METHODOLOGY SHALL CONFORM TO THE CURRENT WMU DEVELOPER'S MANUAL AND/OR STANDARD DETAIL DRAWINGS.
- BACKFILL REQUIREMENTS SHALL BE WITH #9 STONE AND SHALL BE PLACED 6" BELOW THE PIPE, 6" TO THE SIDES OF THE PIPE, AND 12" ABOVE THE PIPE IN NON-PAVED AREAS. REMAINING BACKFILL ABOVE THE PIPE SHALL BE CLEAN SOIL SUITABLE FOR COMPACTION AND FREE OF ALL STONES/ROCKS GREATER THAN ONE SQUARE FOOT.
- STEEL ENCASUREMENT PIPE USED FOR ROAD BORES SHALL BE TAR COATED. ALL FERRULO SEALS AND SPACERS SHALL BE AS APPROVED BY THE ENGINEER PRIOR TO INSTALLATION.
- SANITARY SEWER MARKERS SHALL BE INSTALLED AT ALL MANHOLES UNLESS OTHERWISE DIRECTED BY THE ENGINEER.
- ALL STUB-OUTS SHALL BE CAPPED AND MARKED PER WMU SPECIFICATIONS.
- A LIST OF LOCAL UTILITIES FOLLOWS:

WATER/SANITARY SEWER WINCHESTER MUNICIPAL UTILITIES (859) 744-5434	ELECTRIC POWER KENTUCKY UTILITIES (800) 981-0690
STORM SEWER CLARK COUNTY ROAD DEPARTMENT (859) 745-0255	TELEPHONE BELL SOUTH TELECOMMUNICATIONS (859) 744-9143
CABLE TV TIME-WARNER (888) 683-1000	NATURAL GAS COLUMBIA GAS OF KENTUCKY, INC (800) 432-9345

LEGEND	
---	EX. PROPERTY LINES
---	EX. ELECTRIC LINE
---	EX. TELEPHONE LINE
---	EX. GAS LINES
---	EX. WATER LINES
---	EX. ROADS
---	EX. SANITARY SEWER PIPE
---	EX. SANITARY SEWER FORCE MAIN
---	EX. STORM SEWER PIPE
---	EX. FENCES
---	EX. INTERMEDIATE CONTOURS
---	EX. INDEX CONTOURS
---	EX. STREAMS
---	FLOODPLAIN
+	BENCHMARKS/CONTROL POINTS
+	EX. SANITARY SEWER MANHOLE
+	EX. HEADWALLS
+	EX. TREES
+	EX. POWER POLES
+	EX. GUY WIRES
+	EX. GAS METER
+	EX. GAS VALVE
+	EX. WATER METER
+	EX. WATER VALVE
+	EX. FIRE HYDRANT
---	PROP. SANITARY SEWER PIPE
---	PROP. EASEMENT
○	PROP. SANITARY SEWER MANHOLE
+	SOUNDING
---	PROP. SANITARY SEWER STUB
TR	TO REMAIN
TBR	TO BE REMOVED
TBA	TO BE ABANDONED
TYF	TYPICAL
R/W	RIGHT-OF-WAY
P	PROPERTY LINE
CL	CENTERLINE
EX	EXISTING
PROP.	PROPOSED
INV.	INVERT

MANHOLE COORDINATE SCHEDULE		
M.H. NO.	EASTING	NORTHING
PR MH 1	X=1662337.7720	Y=1809756.6765
PR MH 2	X=1662490.3820	Y=1807556.8907
PR MH 3	X=1662751.3964	Y=180554.8948
PR MH 3A	X=1662875.4420	Y=180676.5865
PR MH 4	X=1662919.0793	Y=180607.3272
PR MH 5	X=1663073.6503	Y=180563.4792
PR MH 6	X=1663233.8164	Y=180527.0502
PR MH 7	X=1663400.4603	Y=180489.1479
PR MH 8	X=1663542.2359	Y=180245.2967
PR MH 9	X=1663648.4197	Y=180062.7099
PR MH 10	X=1663697.7713	Y=189988.9081
PR MH 11	X=1663864.5327	Y=189739.5276
PR MH 12	X=1663961.7714	Y=189594.1138
PR MH 13	X=1664039.8565	Y=189496.4143
PR MH 14	X=1664227.1561	Y=189262.0666
PR MH 15	X=1664414.4557	Y=189027.7185
PR MH 16	X=1664598.0402	Y=188810.5313
PR MH 17	X=1664738.4044	Y=188588.7384
PR MH 18	X=1664890.9415	Y=188378.4907
PR MH 19	X=1665045.2240	Y=188136.1677
PR MH 20	X=1665178.0522	Y=187930.8564
PR MH 21	X=1665325.3462	Y=187706.0115
PR MH 22	X=1665472.4926	Y=187444.3932
PR MH 23	X=1665614.5346	Y=187378.9501

BENCHMARK SCHEDULE		
BENCHMARK NUMBER	DESCRIPTION	ELEVATION
BM-1	IRON PIN & CAP	904.67
BM-2	IRON PIN & CAP	908.31
BM-3	IRON PIN & CAP	912.56
BM-4	IRON PIN & CAP	913.69
BM-5	IRON PIN & CAP	916.45
BM-6	IRON PIN & CAP	915.07
BM-7	IRON PIN & CAP	916.24
BM-8	IRON PIN & CAP	520.60
BM-9	IRON PIN & CAP	490.52

RECORD DRAWING
THIS DRAWING, PREPARED BY CDP ENGINEERS, INC. IS BASED ON THE ORIGINAL TOPOGRAPHIC SURVEY MODIFIED BY CDP TO REFLECT CHANGES PROVIDED & DOCUMENTED BY THE CONTRACTOR. CDP ENGINEERS, INC. PERFORMED SURVEYS OF THE PROPOSED SANITARY SEWER CONSTRUCTION CONTAINED IN THESE DRAWINGS. THE CONTRACTOR WAS REQUIRED TO MAINTAIN THE RECORD DRAWINGS & TO CERTIFY THE RECORD DRAWINGS AS COMPLETE & ACCURATE.

3250 BLAZER PARKWAY
LEWISTON, KENTUCKY 40369
Ph: (859)264-7500 Fax: (859)264-7501

CDP ENGINEERS, INC.
CARTER DIXON PARTNERS

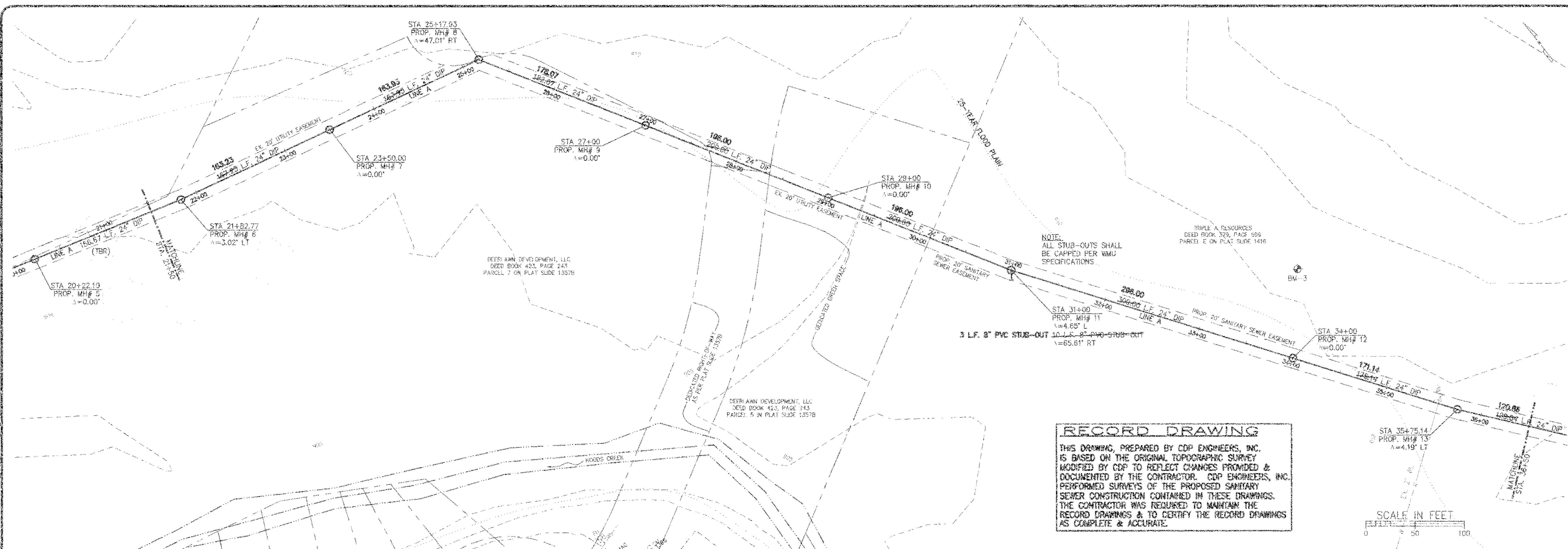
SCALE: AS SHOWN
DESIGNED BY: JG
DRAWN BY: JG
CHECKED BY: JG
DATE: 3/15/2007

PROJECT NO: 0803
DATE: MARCH 2007
CADD DWG ID: 0803-MASTER.DWG

WINCHESTER MUNICIPAL UTILITIES
120 NORTHEAST STREET
WINCHESTER, KENTUCKY

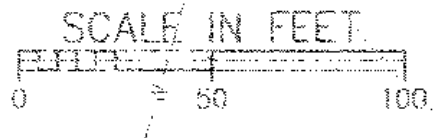
General Notes, Legend, & Sheet Layout
Hoods Creek Interceptor
Winchester, KY

SHEET NUMBER
2

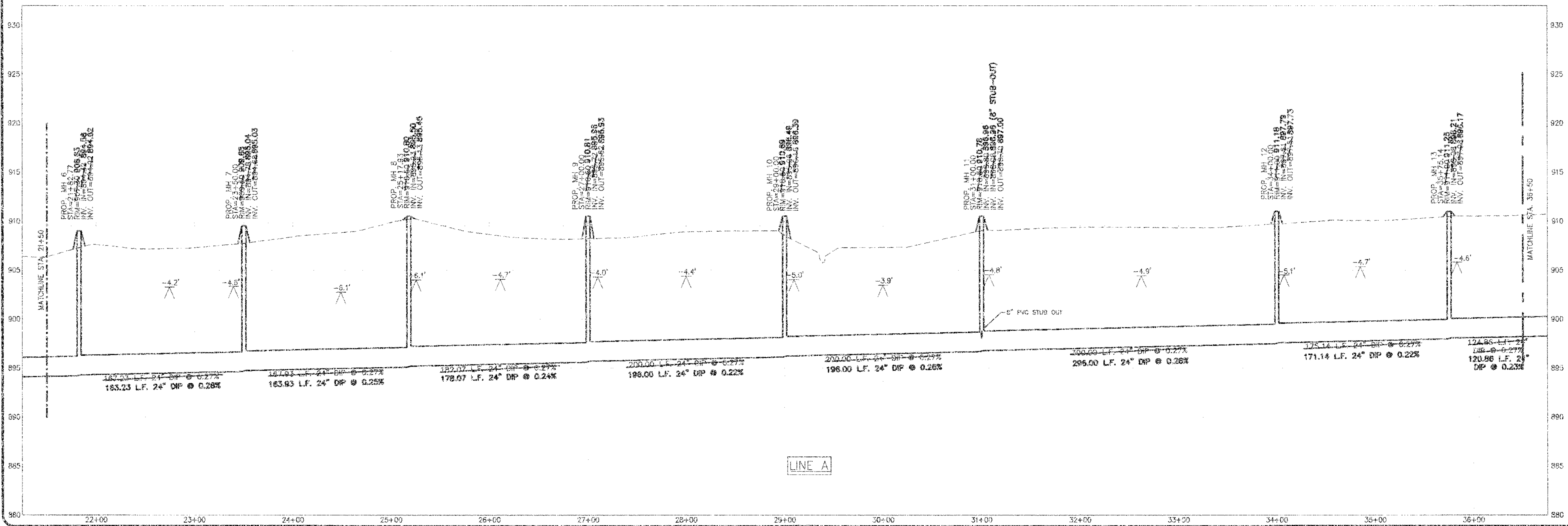


RECORD DRAWING

THIS DRAWING, PREPARED BY CDP ENGINEERS, INC. IS BASED ON THE ORIGINAL TOPOGRAPHIC SURVEY & MODIFIED BY CDP TO REFLECT CHANGES PROVIDED & DOCUMENTED BY THE CONTRACTOR. CDP ENGINEERS, INC. PERFORMED SURVEYS OF THE PROPOSED SANITARY SEWER CONSTRUCTION CONTAINED IN THESE DRAWINGS. THE CONTRACTOR WAS REQUIRED TO MAINTAIN THE RECORD DRAWINGS & TO CERTIFY THE RECORD DRAWINGS AS COMPLETE & ACCURATE.



PROFILE SCALE: HORIZ 1"=50' VERT 1"=5'



CDP ENGINEERS, INC.
CARTER DIXON PARTNERS

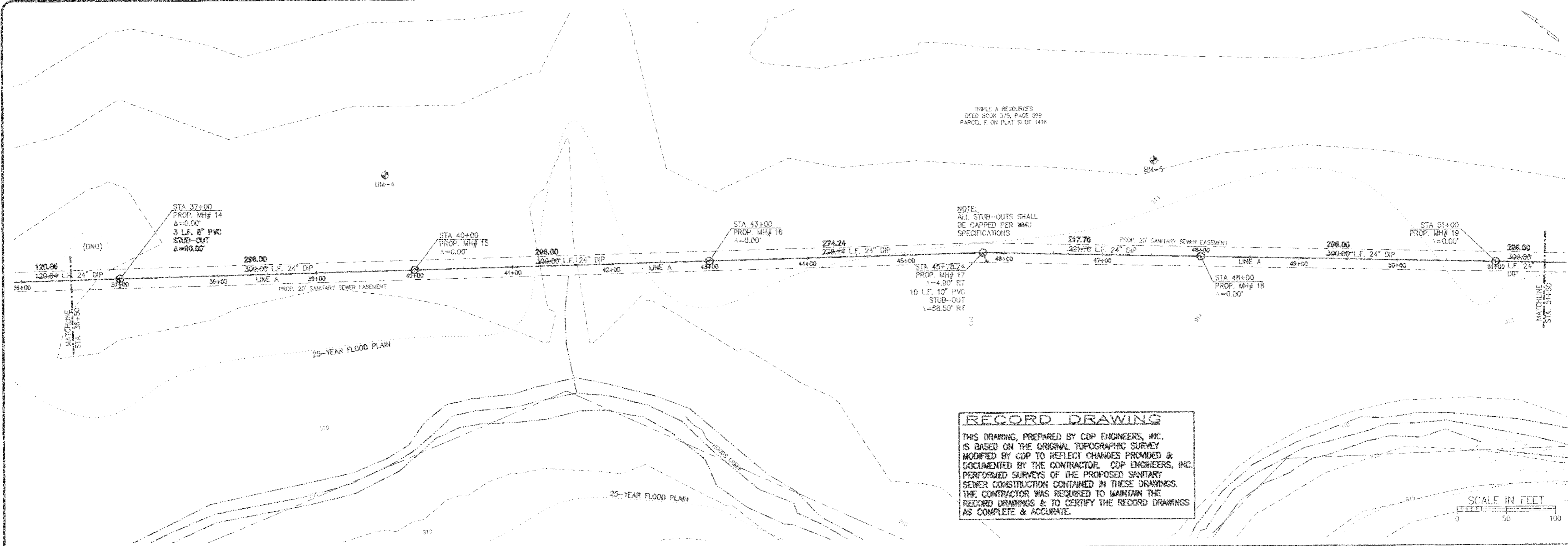
SCALE	DESIGNED BY	AS SHOWN	REVISION	DATE
1"=50'	JC	JC		
	DRAWN BY	SM, JS		
	CHECKED BY	DOM		
	PROJECT NO.	06042		
	DATE	MARCH 2009		
	CADD DWG ID	06042 MASTER.dwg		

WINCHESTER MUNICIPAL UTILITIES

150 NORTH MAIN STREET
WINCHESTER, MARYLAND

Plan & Profile:
Sta. 21+50-36+50
Hoods Creek Interceptor
Winchester, KY

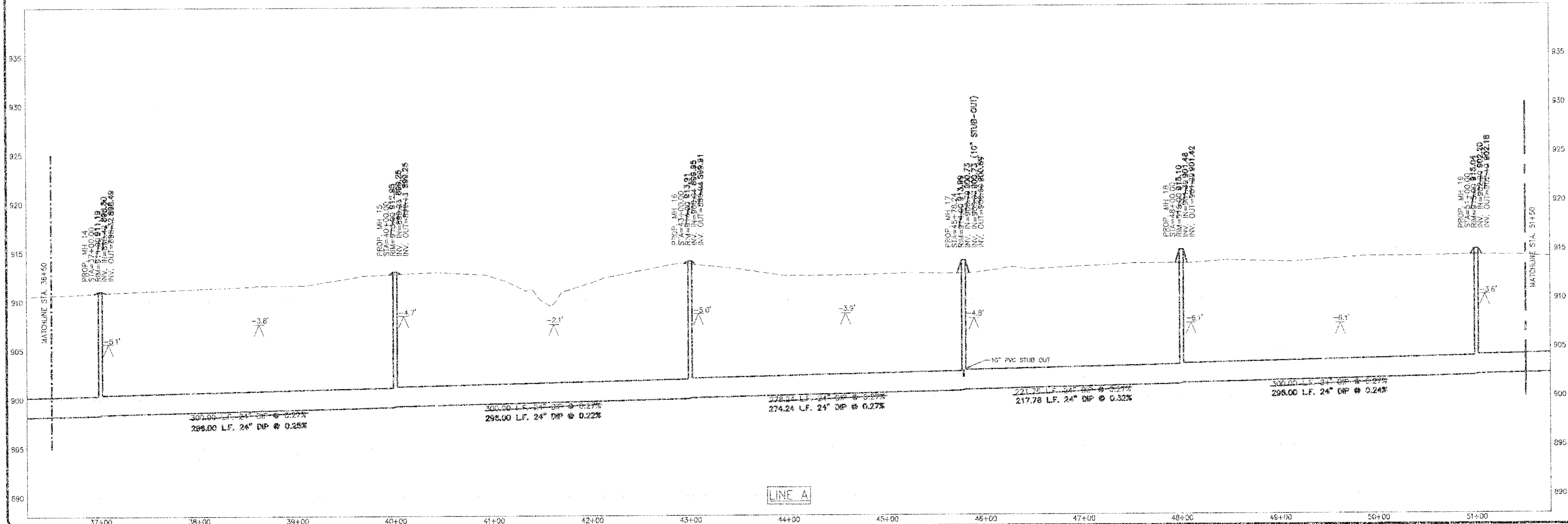
SHEET NUMBER
4



RECORD DRAWING

THIS DRAWING, PREPARED BY CDP ENGINEERS, INC. IS BASED ON THE ORIGINAL TOPOGRAPHIC SURVEY MODIFIED BY CDP TO REFLECT CHANGES PROVIDED & DOCUMENTED BY THE CONTRACTOR. CDP ENGINEERS, INC. PERFORMED SURVEYS OF THE PROPOSED SANITARY SEWER CONSTRUCTION CONTAINED IN THESE DRAWINGS. THE CONTRACTOR WAS REQUIRED TO MAINTAIN THE RECORD DRAWINGS & TO CERTIFY THE RECORD DRAWINGS AS COMPLETE & ACCURATE.

PROFILE SCALE: HORIZ 1"=50' VERT 1"=5'



3250 BLAZER PARKWAY
LEXINGTON, KENTUCKY 40509
PH: (859)264-7500
FAX: (859)264-7501

CDP
ENGINEERS, INC.
CARTER DIXON PARTNERS

SCALE	AS SHOWN	REVISION	BY	DATE
DESIGNED BY	SMV JS			
DRAWN BY	DCM			
CHECKED BY	DCM			
PROJECT NO.	06042			
DATE	MARCH 2009			
CADD DWS ID	06042 MASTER.dwg			

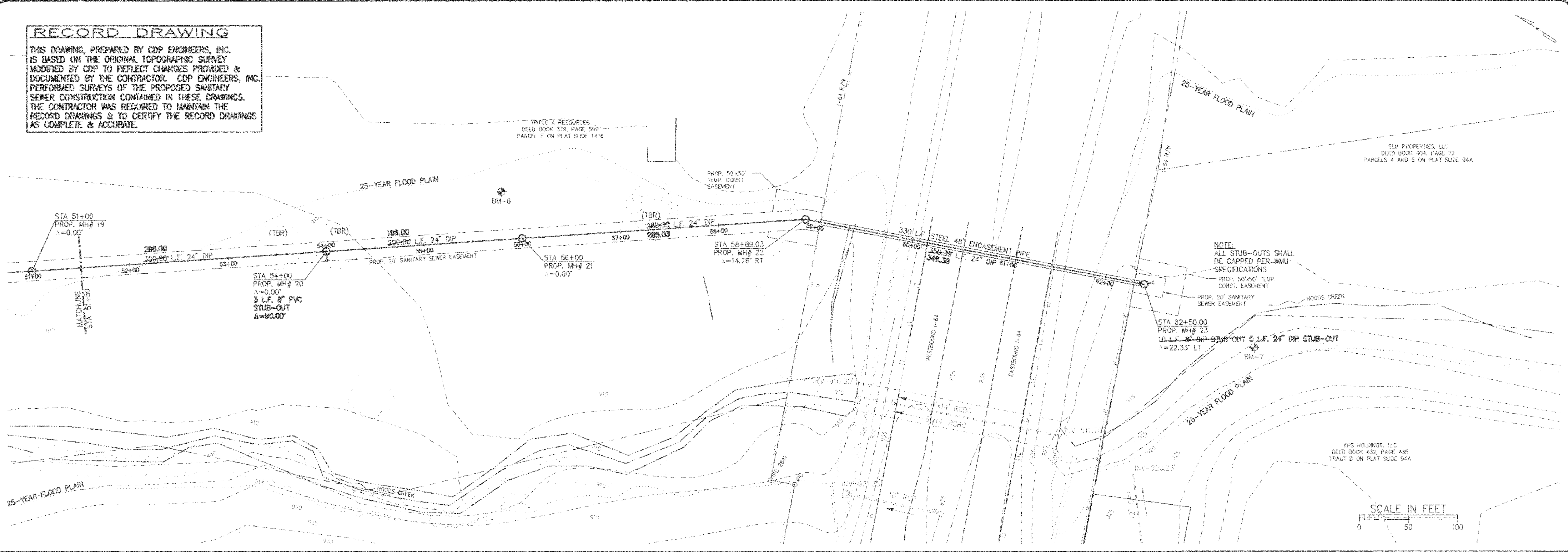
WINCHESTER
MUNICIPAL UTILITIES
150 NORTH MAIN STREET
WINCHESTER, KENTUCKY

Plan & Profile:
Sta. 36+50-51+50
Hoods Creek Interceptor
Winchester, KY

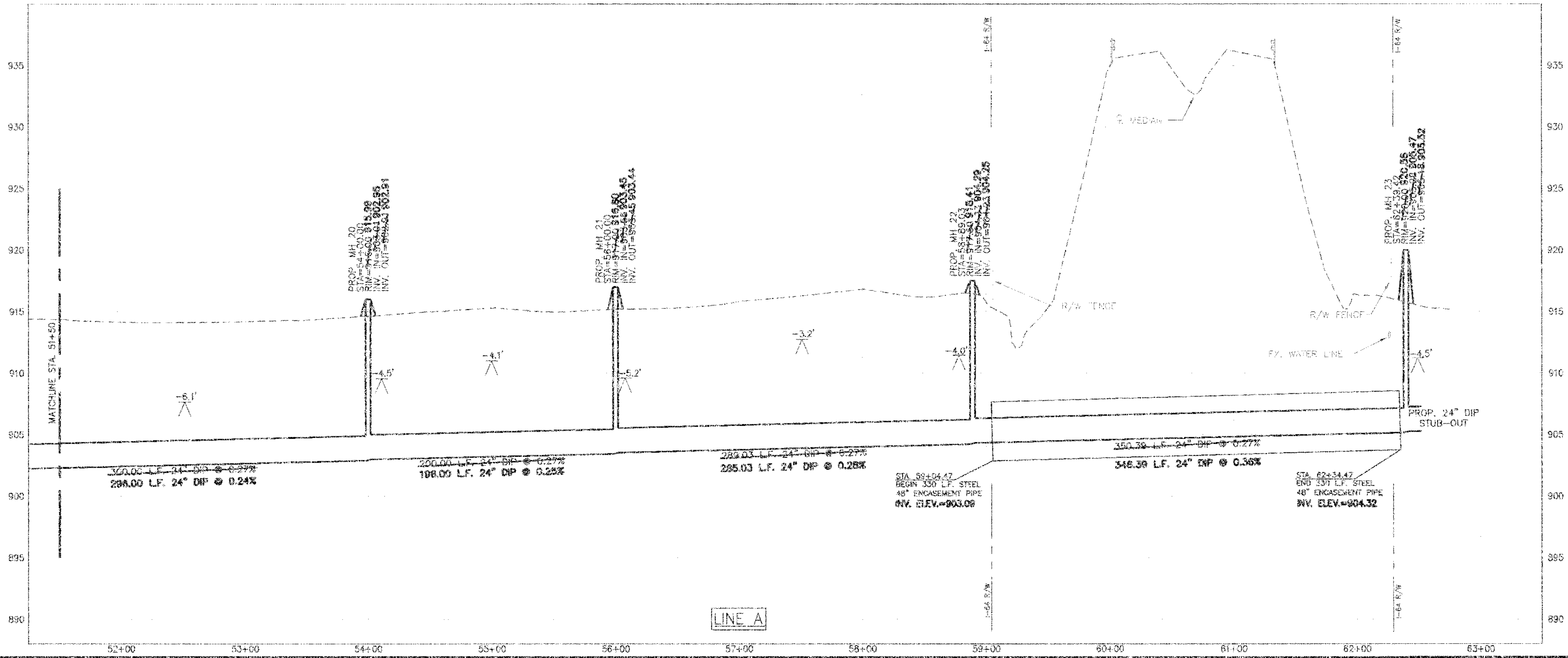
SHEET NUMBER
5

RECORD DRAWING

THIS DRAWING, PREPARED BY CDP ENGINEERS, INC. IS BASED ON THE ORIGINAL TOPOGRAPHIC SURVEY MODIFIED BY CDP TO REFLECT CHANGES PROVIDED & DOCUMENTED BY THE CONTRACTOR. CDP ENGINEERS, INC. PERFORMED SURVEYS OF THE PROPOSED SANITARY SEWER CONSTRUCTION CONTAINED IN THESE DRAWINGS. THE CONTRACTOR WAS REQUIRED TO MAINTAIN THE RECORD DRAWINGS & TO CERTIFY THE RECORD DRAWINGS AS COMPLETE & ACCURATE.



PROFILE SCALE: HORIZ 1"=50' VERT 1"=5'



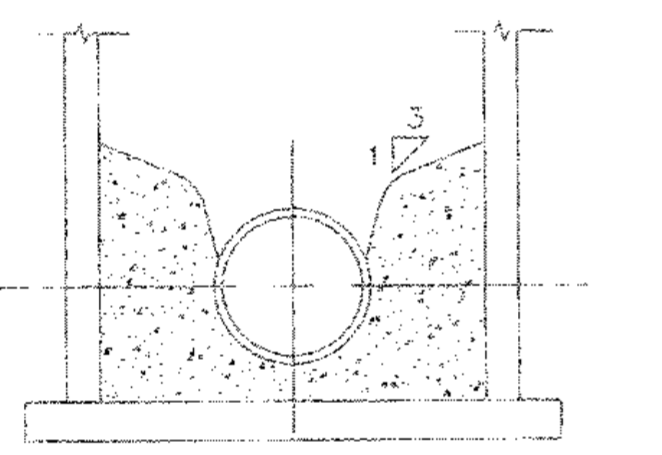
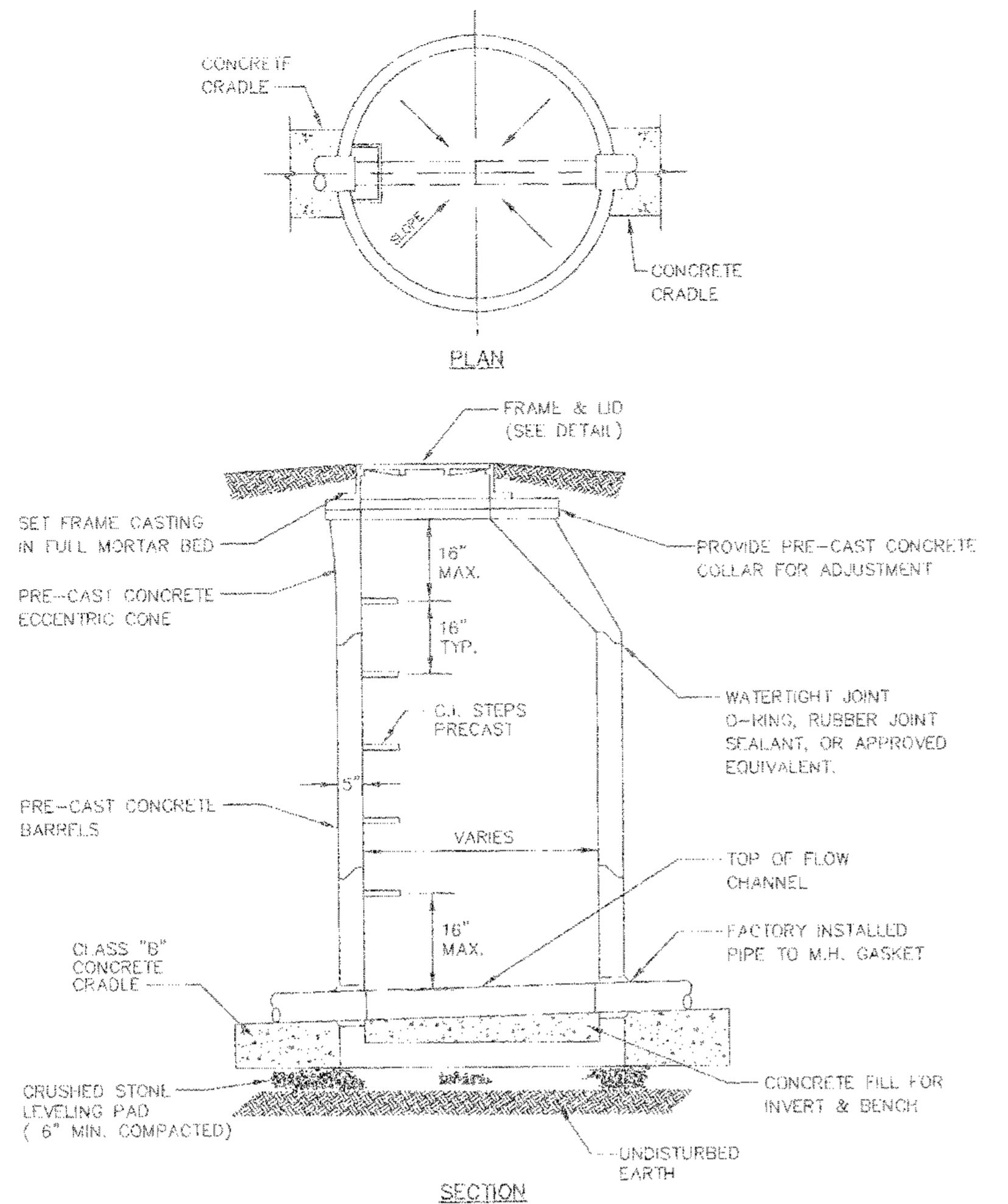
3250 BLAZER PARKWAY
 LEWINGTON, KENTUCKY 40509
 Ph: (859)264-7500
 Fax: (859)264-7501
CDP
 ENGINEERS, INC.
 CARTER DIXON PARTNERS

SCALE	AS SHOWN	DATE
DESIGNED BY	SM, JS	
DRAWN BY	DOM	
CHECKED BY	CD	
PROJECT NO.	06042	
DATE	MARCH 2009	
CADD DWG ID.	06042 MASTER.DWG	

WINCHESTER MUNICIPAL UTILITIES
 150 NORTH MAIN STREET
 WINCHESTER, KENTUCKY

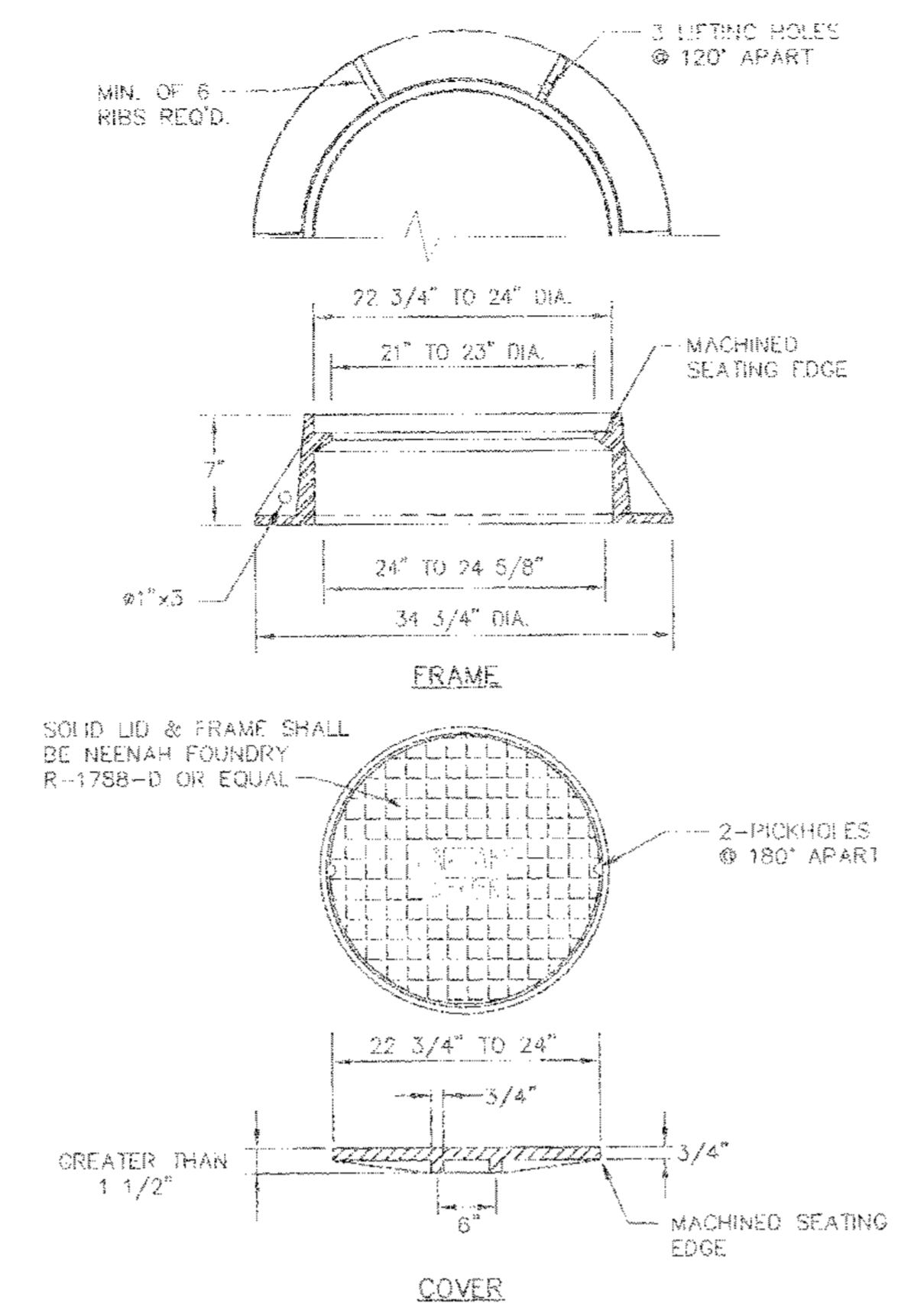
Plan & Profile:
Sta. 51+50-62+39.42
 Hoods Creek Interceptor
 Winchester, KY

SHEET NUMBER **6**

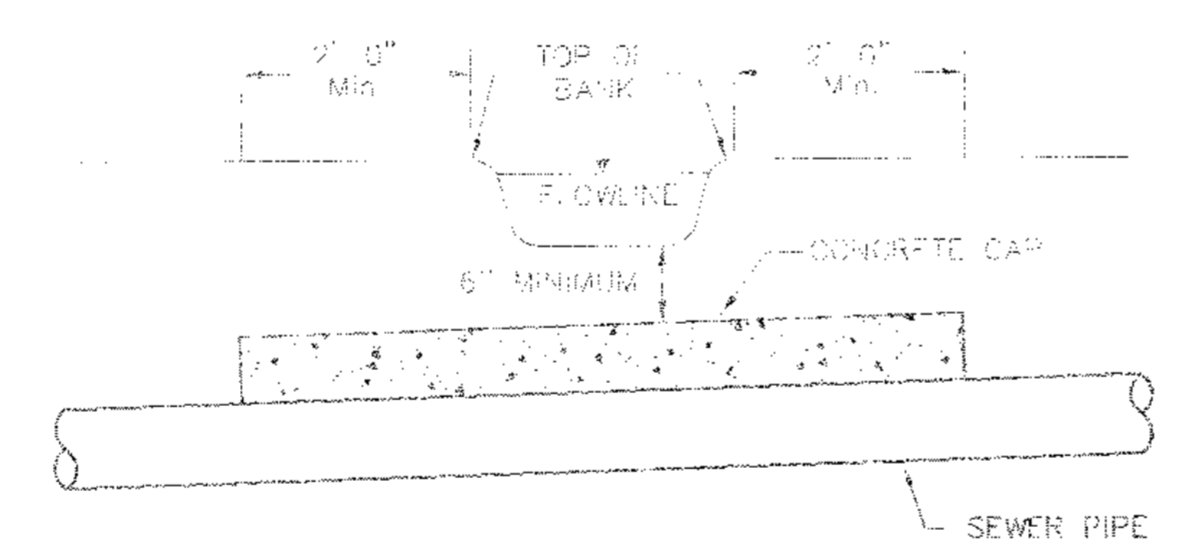


NOTE: STILPS SHALL BE VERTICALLY ALIGNED

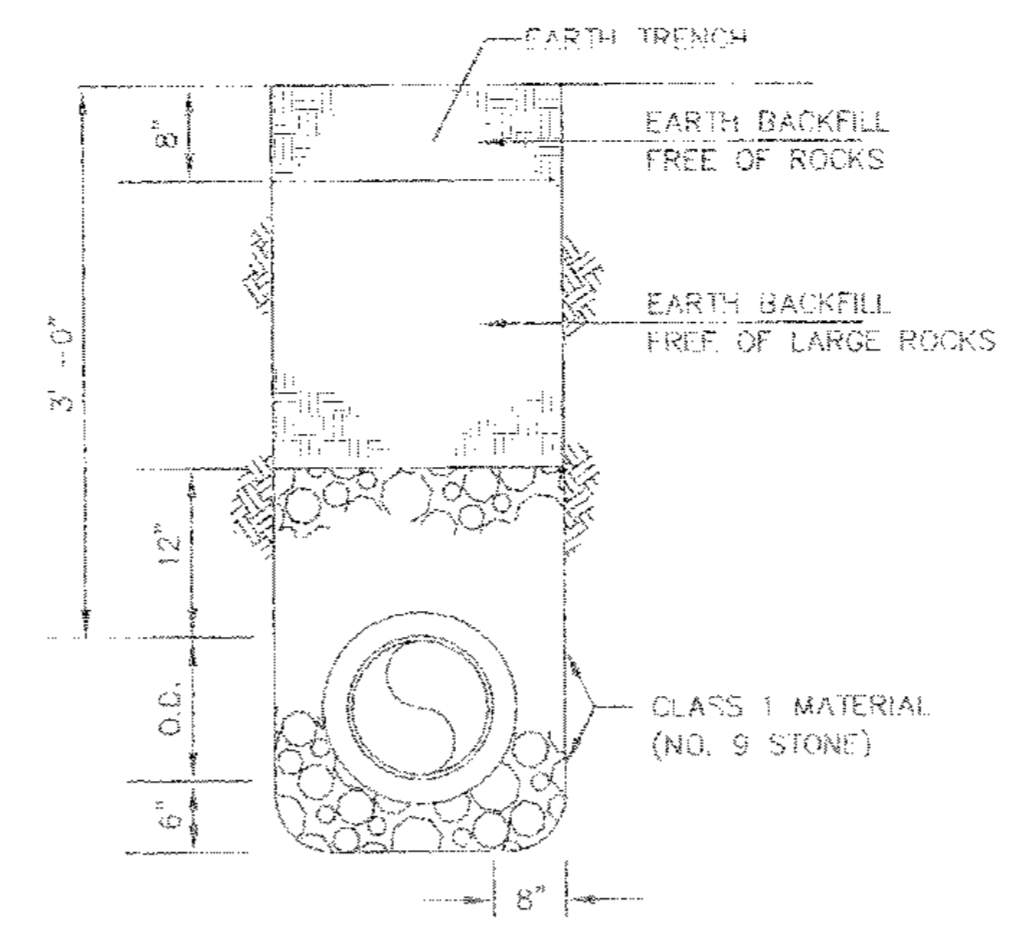
STANDARD MANHOLE
NOT TO SCALE



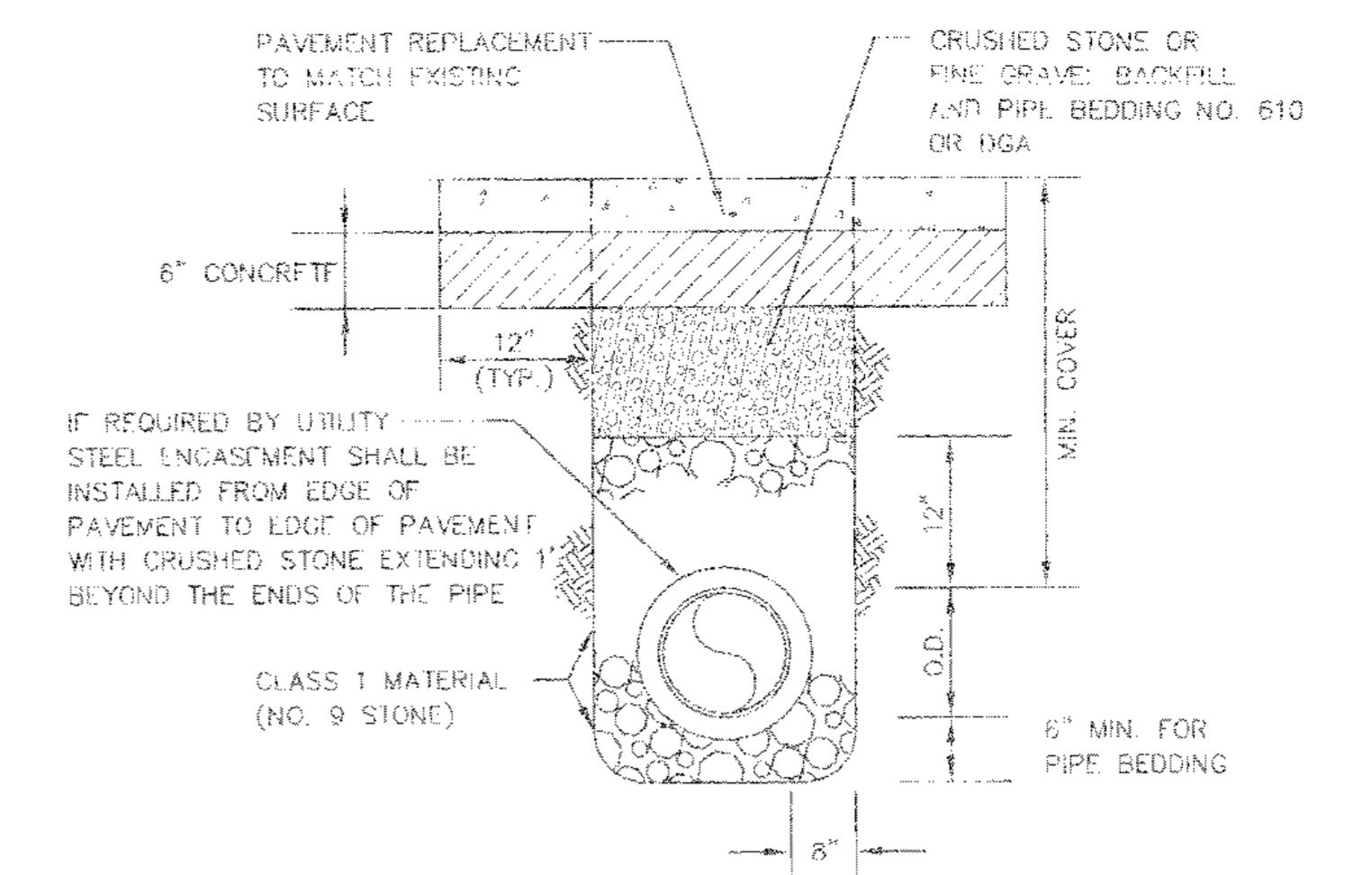
MANHOLE FRAME AND COVER
NOT TO SCALE



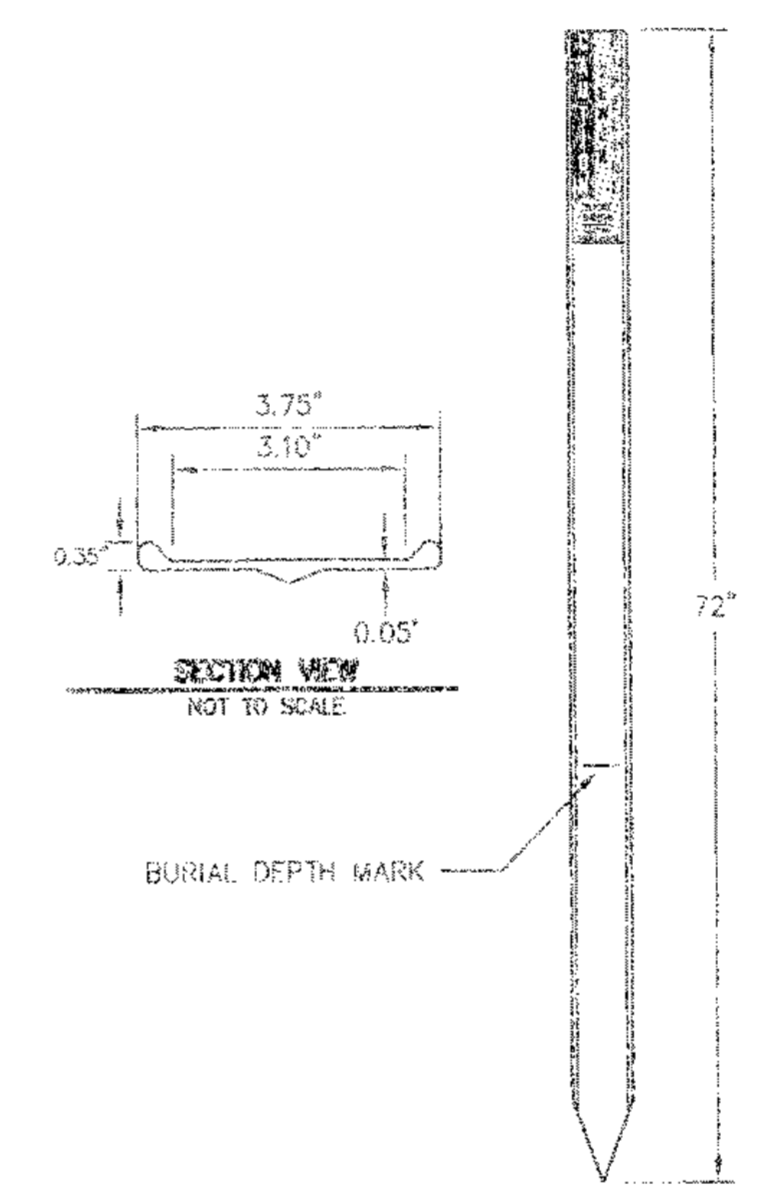
TYPICAL CREEK CROSSING
NOT TO SCALE



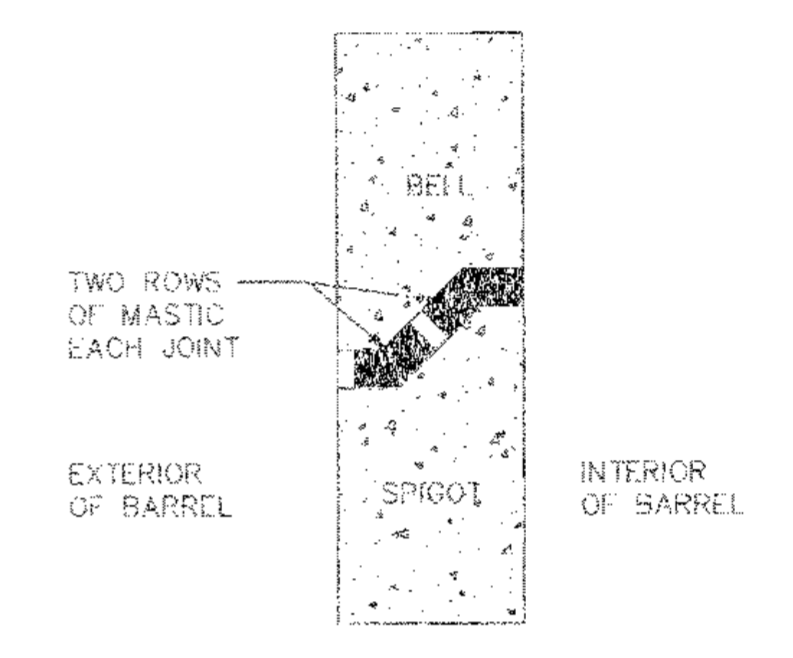
BACKFILL AND BEDDING IN UNPAVED AREAS
NOT TO SCALE



BACKFILL AND BEDDING IN PAVED AREAS
NOT TO SCALE



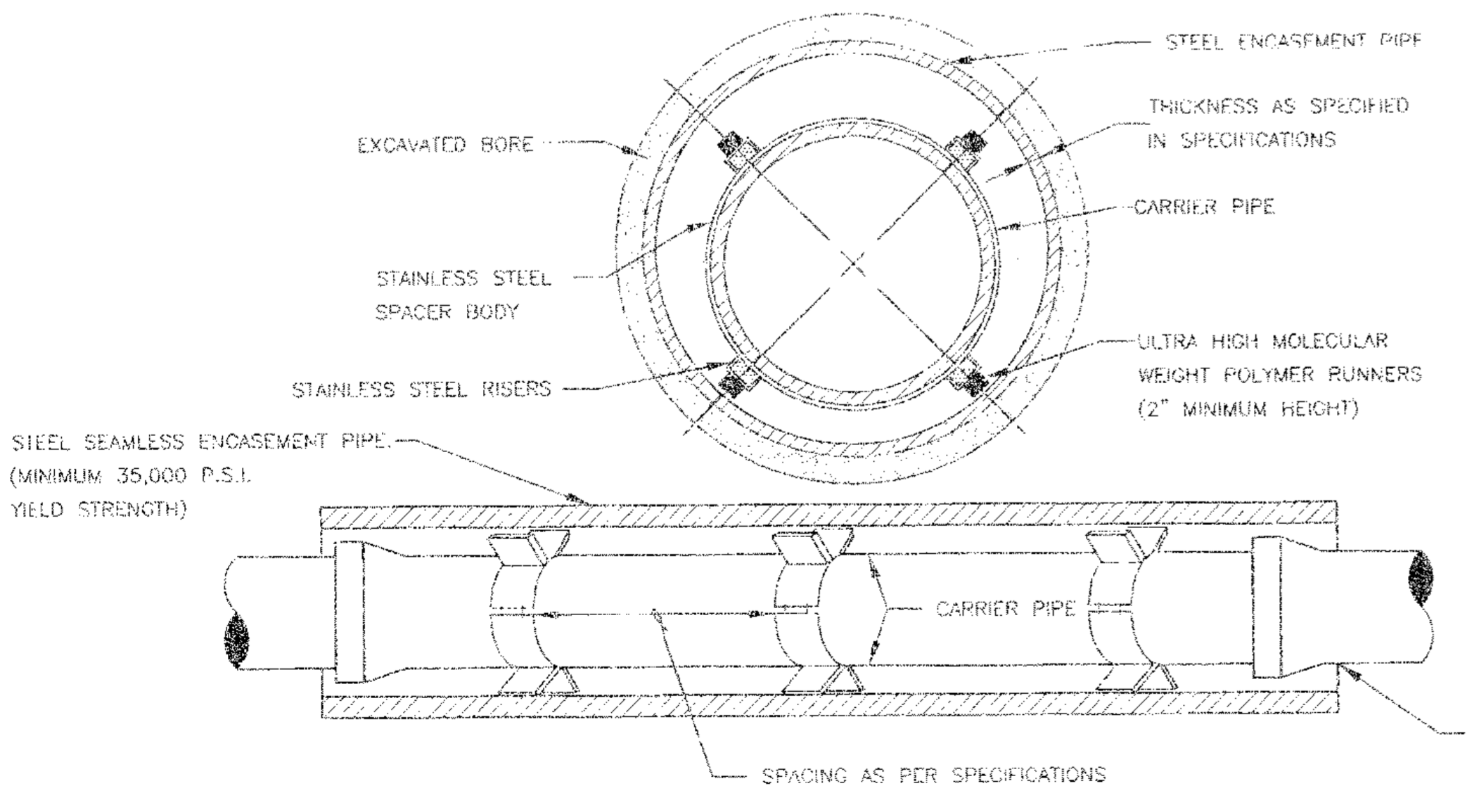
STATIONARY PIPELINE LOCATION MARKER
NOT TO SCALE



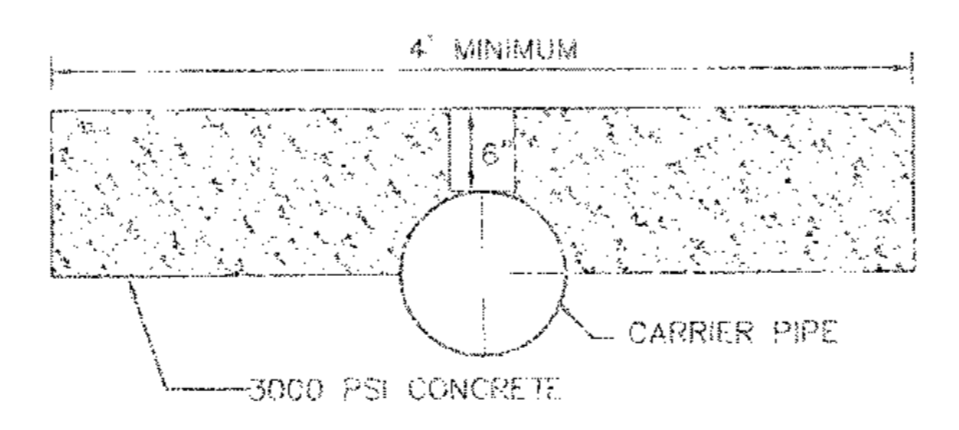
1. REMOVE ALL LOOSE PARTICLES FROM SURFACE TO BE JOINED.
2. SEALANT AND SURFACES MUST BE DRY.
3. USE TWO ROWS OF 1-1/4\"/>
- 4. FOR BARRELS 6\"/>

JOINT DETAIL
NOT TO SCALE

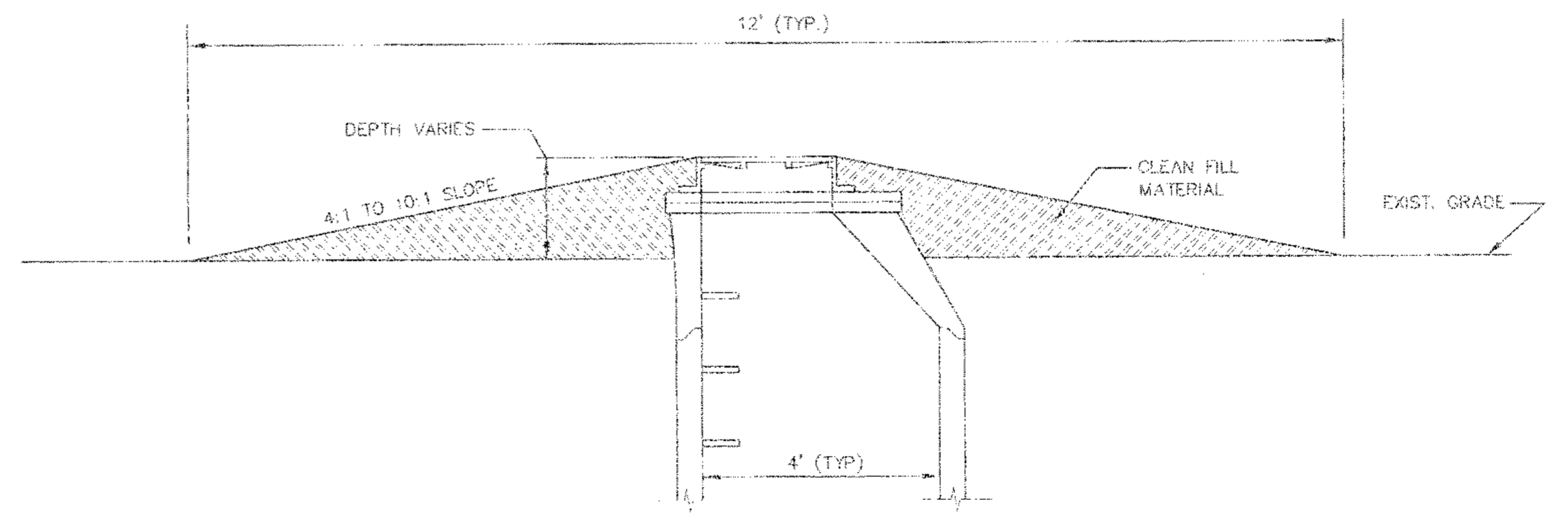
RECORD DRAWING
THIS DRAWING, PREPARED BY CDP ENGINEERS, INC. IS BASED ON THE ORIGINAL TOPOGRAPHIC SURVEY MODIFIED BY CDP TO REFLECT CHANGES PROVIDED & DOCUMENTED BY THE CONTRACTOR. CDP ENGINEERS, INC. PERFORMED SURVEYS OF THE PROPOSED SANITARY SEWER CONSTRUCTION CONTAINED IN THESE DRAWINGS. THE CONTRACTOR WAS REQUIRED TO MAINTAIN THE RECORD DRAWINGS & TO CERTIFY THE RECORD DRAWINGS AS COMPLETE & ACCURATE.



STEEL ENCASEMENT AND BORE ASSEMBLY
NOT TO SCALE



CONCRETE CAP DETAIL
NOT TO SCALE



MANHOLE ABOVE GRADE
NOT TO SCALE

3250 BLAZER PARKWAY
LEWISTON, KENTUCKY 40509
Ph: (609)264-7500 Fax: (609)264-7501

CDP ENGINEERS, INC.
CARTER DIXON PARTNERS

SCALE	AS SHOWN	REVISION	DATE
DESIGNED BY	SM, AS		
DRAWN BY	DCP		
CHECKED BY	DCP		
PROJECT NO.	06042		
DATE	MARCH 2008		
CADD DWG. ID	DED42_MASTER.dwg		

WINCHESTER MUNICIPAL UTILITIES
100 NORTH MAIN STREET
WINCHESTER, KENTUCKY

Standard Details
Hoods Creek Interceptor
Winchester, KY

SHEET NUMBER
8